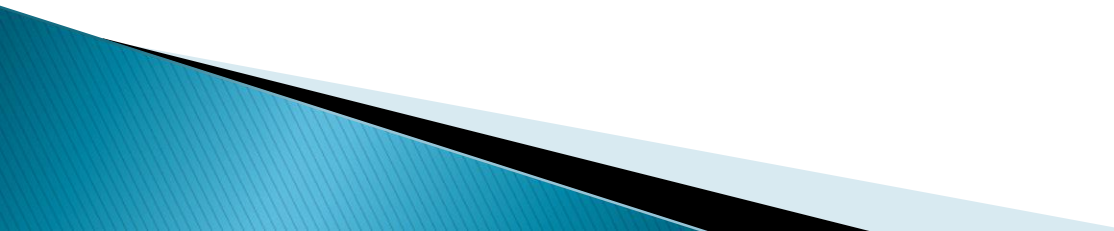


# Lower Neponset River Site Boston/Milton, MA

February 2020



# Topics for Discussion

- ▶ Introduction
  - ▶ MassDEP – Request for EPA Involvement
  - ▶ Area of Interest
  - ▶ National Priorities List (NPL)
  - ▶ Overview of Superfund Process
  - ▶ Timeline of Activities
  - ▶ Outreach
- 

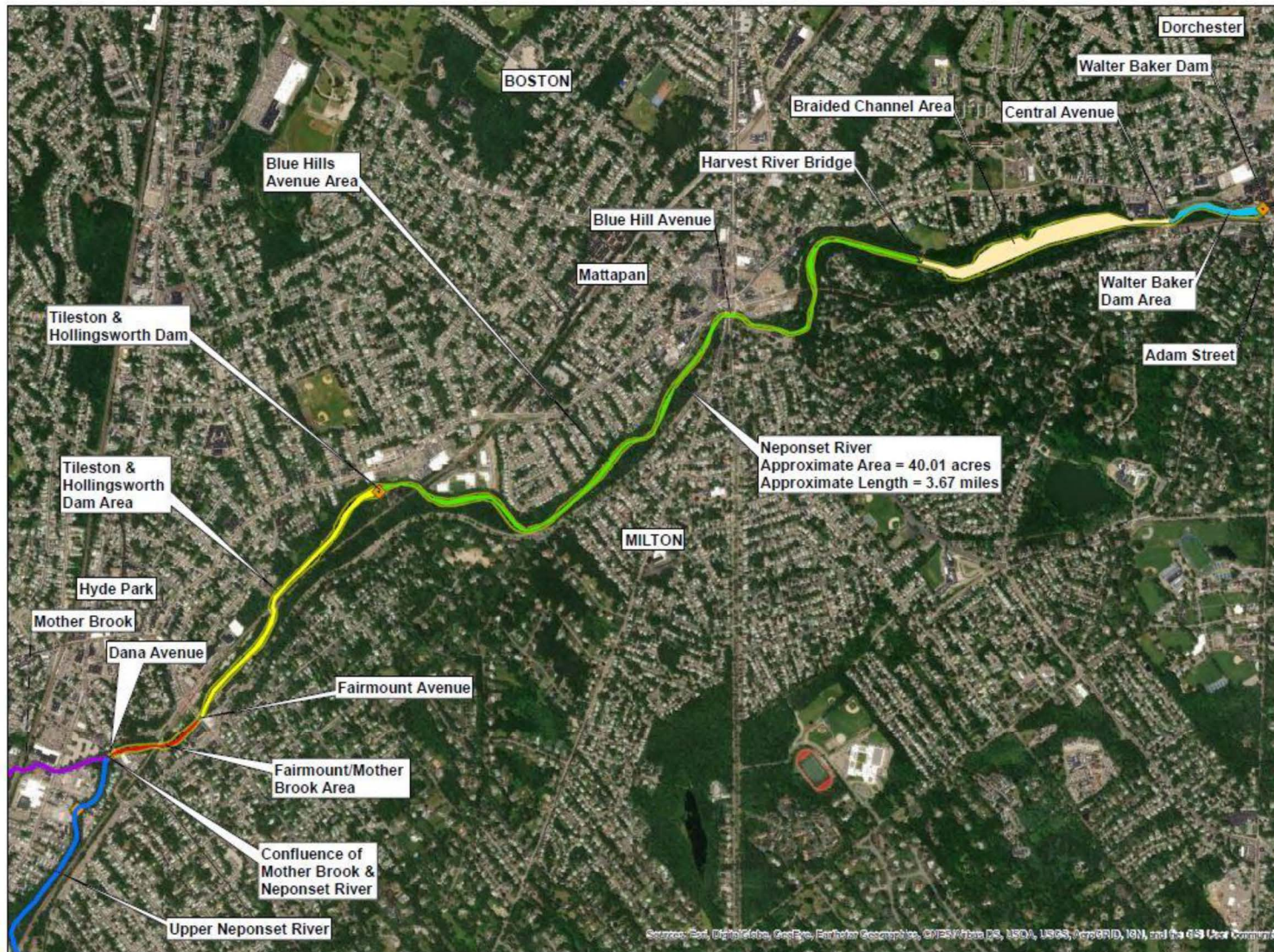


Figure 2

Site Map

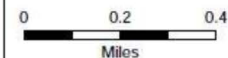
Lower Neponset River PCBs  
Boston/Milton, Massachusetts

EPA Region I  
Superfund Technical Assessment and  
Response Team (START) IV  
Contract No. EP-S3-15-01

TDD Number: TO1-01-16-06-0009  
Created by: B. Mace  
Created on: 3 April 2017  
Modified by: B. Mace  
Modified on: 18 April 2019

LEGEND

- Approx. Site Boundary
- Upper Neponset River
- Mother Brook to Charles
- Dams
- Walter Baker Dam Area
- Braided Channel Area
- Blue Hill Avenue Area
- Tileston & Hollingsworth Dam Area
- Fairmount/Mother Brook Area



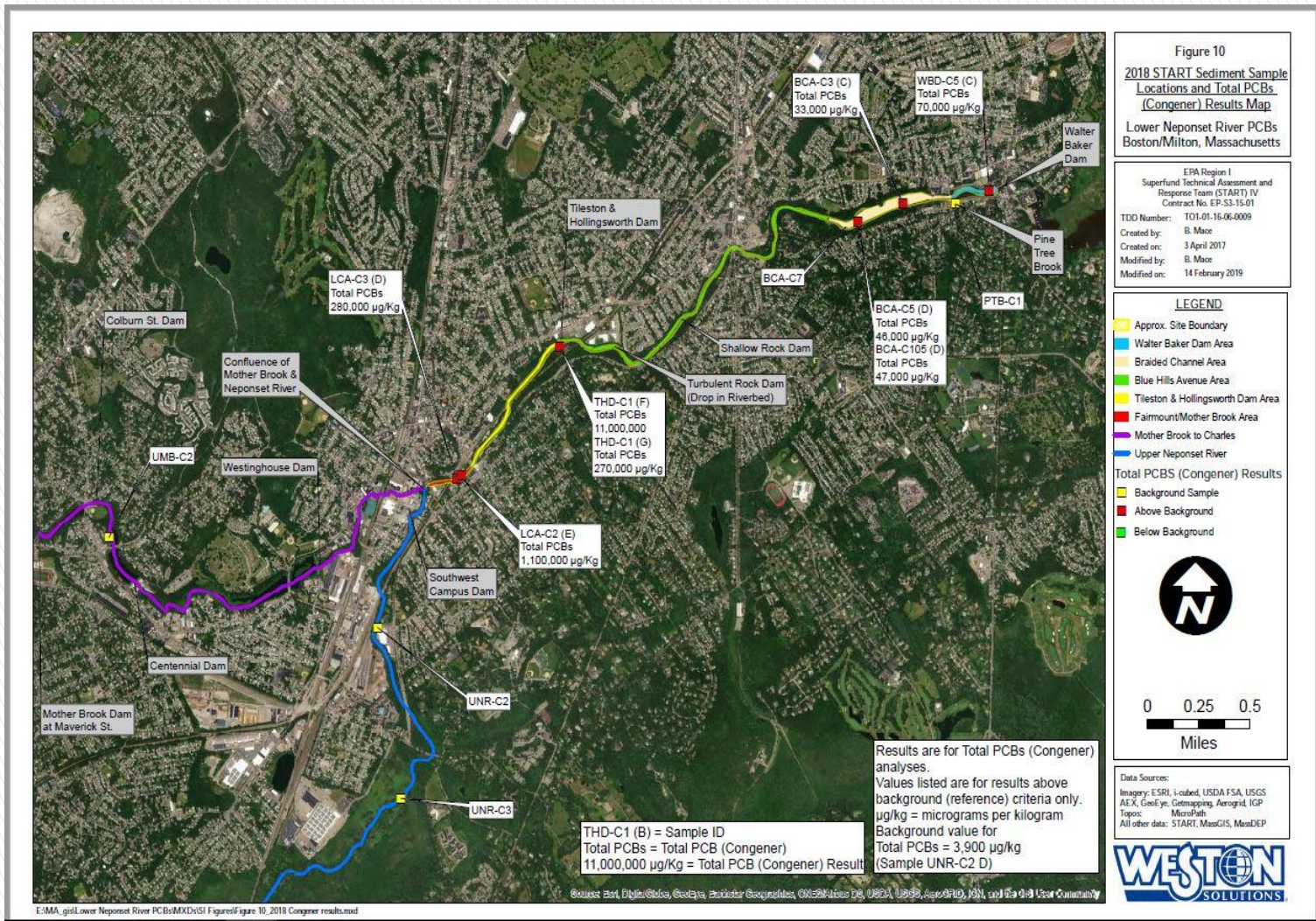
Data Sources:

Imagery: ESRI, i-cubed, USDA FSA, USGS  
AEX, GeoEye, Getmapping, Aerogrid, IGP  
Topos: MicroPath  
All other data: START, MassGIS, MassDEP  
USGS



# Studies / Evaluations

- ▶ Extensive USGS sampling – 2002–2006
- ▶ MassDEP work – Oversight/evaluation of various studies and remediation of Mother Brook.
- ▶ EPA
  - Limited sampling to confirm previous results November 2017 and September 2018
  - Preliminary Assessment – August 2018
  - Site Inspection – April 2019
  - Hazard Ranking System Package – TBD



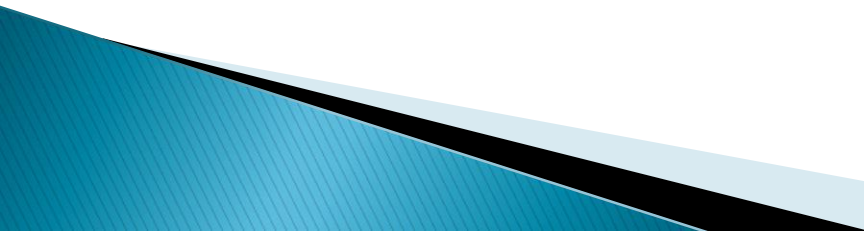
# PCB Concentrations in Sediment

# What is the National Priorities List (NPL)?

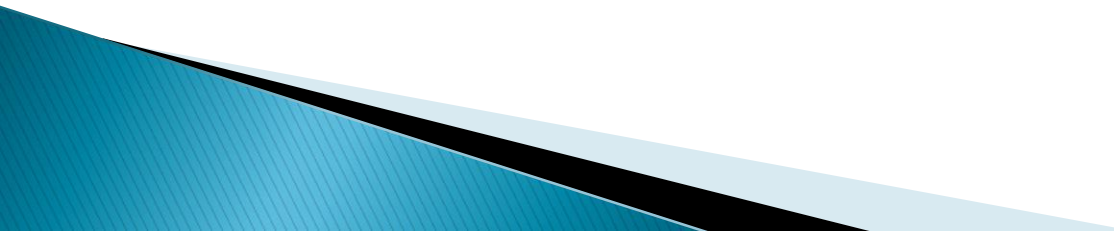
- ▶ National list of sites that EPA determines require further detailed investigation, and potential cleanup action in accordance with CERCLA\*.
- ▶ Investigations at NPL sites determine whether long-term threats to human health & environment exist.
- ▶ Where needed, comprehensive strategy to address threats is implemented.

\*CERCLA = Comprehensive Environmental Response, Compensation and Liability Act  
(Often referred to as Superfund)

# Why Add A Site To NPL?

- ▶ Sites on NPL subject of detailed investigation, and cleanup where warranted.
  - ▶ Only sites on the NPL are eligible to receive federal Superfund resources for comprehensive cleanup.
  - ▶ Federal resources can include monetary support, as well as expertise/staffing.
  - ▶ Absent the use of federal resources, comprehensive cleanup strategies may not be able to be pursued.
- 

# How is a Site Added to the NPL?

- ▶ Sites added to NPL through federal rulemaking.
  - ▶ Requires letter of concurrence from Governor.
  - ▶ Site is first proposed to the NPL.
  - ▶ 60-day public comment period.
  - ▶ Site finalized to NPL, upon consideration of public comments received.
- 

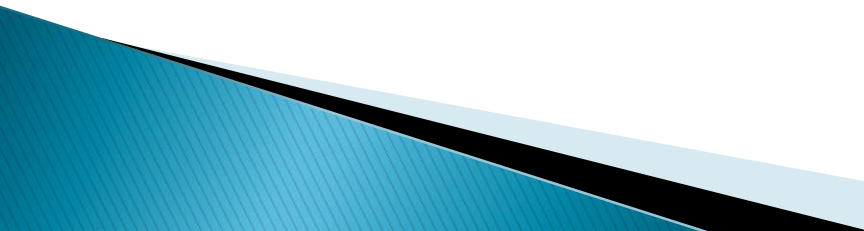


# The Superfund Process: Discovery and Cleanup for a Long-Term Site



# Lower Neponset River

## – Possible Timeline for NPL

- ▶ Develop a Hazard Ranking System (HRS) package.
  - ▶ Propose site to NPL – Fall 2020/Winter 2021 (tentative).
  - ▶ 60 day public comment period.
  - ▶ Finalize site to NPL – 2021 (dependent on public comments).
  - ▶ Letter of concurrence from Governor – likely Summer 2020.
- 

# Outreach

- ▶ Meetings held to date:
  - City of Boston/Town of Milton
    - March 2017
    - April 2017 (Boston only)
    - Milton Conservation Commission public mtg April 2017
    - November 2019
  - Federal legislative delegation briefing – Dec. 2019
  - State legislative delegation briefing – Feb. 2020
  - Boston City Council member briefing – Feb. 2020
- ▶ Planned meetings:
  - EPA sponsored public informational meeting Mattapan – Feb. 24, 2020
  - EPA/MassDEP presentation at Milton BOS meeting – Feb. 26, 2020

# Questions / Discussion